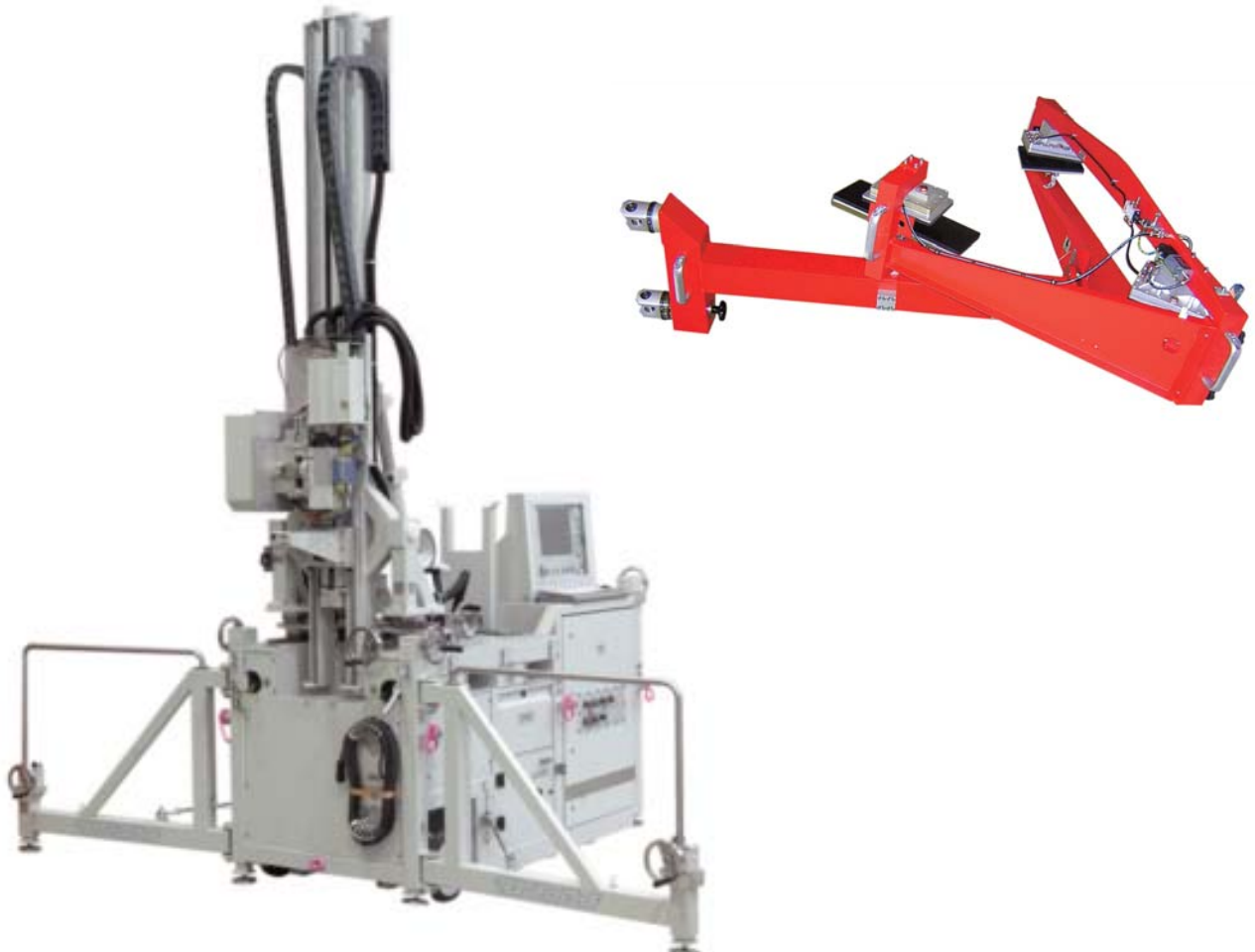
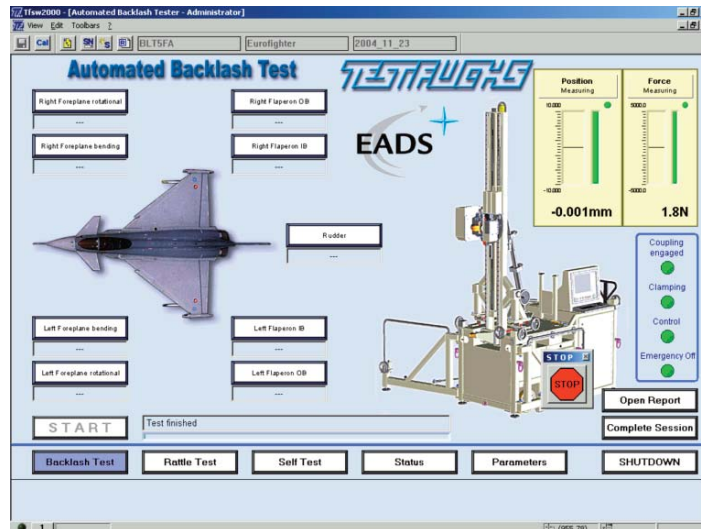


Backlash-Tester

>BLT5FA-M5<



- > Safe and fast evaluation of the backlash and the stiffness of the actuator in the drive unit of control surfaces of the EUROFIGHTER EF2000
- > Check of the primary control surfaces Foreplane, Flaperon and Rudder
- > Performance of torsional tests and bending tests
- > Approved for the use in ex-range (Zone 1) individual testing according to 94/9/EC, annex IX
Ex II 2G T4
TPS 04 ATEX 1 0001 X
- > Mechanical shock (drop test, impact test) and vibration; accredited according to MIL-STD 810F
- > EMC accredited according to EFA-specification SPE-J-000-E-1006, edition 2 and EMC-Directive 89/336 EEC
- > Connection of the Electronic Control & Monitoring Unit (EC&MU)
- > 3-stage safety concept to protect the aircraft
- > Quick positioning at the aircraft with integrated lift and transport unit
- > Pneumatically actuated membrane elements for clamping the control surfaces



- > Operation via TFT-Display and keyboard resp. via remote control at visual control of the test run
- > Network capability
- > Automatic backlash calculation including report generator and storage of the test report
- > Remote maintenance via modem
- > Uninterruptible power supply for PC in case of power failure

- > Compensation of control surface weight and clamping weight
- > Horizontal and vertical force insertion possible
- > Contact-free laser optical stroke measuring system
- > Ergonomic, noise reduced construction
- > Clamps and accessories stored in aluminium boxes

> **Option 400Hz voltage supply with AC/AC-Converter**



> **Transport Container**



TECHNICAL DATA

> **Supply voltage tester**

Mains supply: 1/N/PE AC 50Hz 230V
 Option with AC/AC-Converter: 3-phase, 400Hz, 115/200V
 Nominal power: 2600VA
 Nominal current: 11A

> **Compressed air supply**

Range: 7 to max. 1 bar, 7lps

> **Noise level**

70dBA

> **Measurements**

Force:	Accuracy 0.1% o.m.r. Range ±5000N
Force safety coupling:	Accuracy 3% o.m.r. Range 0 to 5000N
Force monitoring:	Accuracy 5% o.m.r. Range ±5000N
Torque:	Accuracy 0.1% o.m.r. Range ± 1500Nm
Stroke:	Accuracy 0.1% o.m.r. Range ± 10 mm
o.m.r.	of measuring range

> **Dimensions**

Operation:	Transport
Length:	2600mm Length: 3050mm
Width:	3600mm Width: 1300mm
Height:	3900mm Height: 2000mm
Mass:	1800kg

> **Operation temperature**

-10°C to +45°C

> **AC/AC Converter**

Mains supply:	115/200V, 400Hz, 3-phase
Output voltage:	230VAC, 50Hz
Dimensions:	Length: 700mm Width: 480mm Height: 770mm
Mass:	95kg

> **Transport Container**

Dimensions:	Length: 4000mm Width: 2200mm Height: 2440mm
Mass:	2550kg