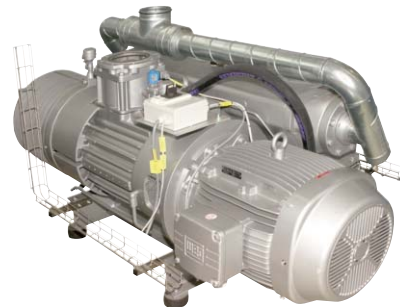


## Test Stand for Safety Valves

### >BSV1AF<



For computer controlled testing of safety-/ outflow valves to their characteristics like test pressure, decrease of pressure, leakage, flow etc. with a max. flow of 100lbpm

- > Due to the use of appropriate adaptations it is possible to test many different types of units under test (UUTs); (e.g. at present, valves of the aircraft types Boeing 747 / 737 / 777 / AWACS and C-135 are tested)
- > Computer controlled via moveable operating panel with main computer, TFT-monitor, keyboard, mouse and printer
- > Data recording with disc drive and/or CD-RW drive

## GENERAL INFORMATION

- > Two TFT-monitors for graphical indication of the measuring data
- > Keyboard to operate the test stand with software program <TFSW 2000>
- > Printer for test records
- > Modem system for remote maintenance
- > 6 pcs. air-cooled vacuum pumps to generate the test vacuum
- > All necessary adaptations to connect the UUTs are in the test chamber
- > Hydraulic clamping of the moveable test chamber
- > UUT installation in every angle position
- > Quick adaption via V-clamps
- > Large inspection window
- > UUT-monitoring via WebCam
- > All circuits connectable
- > All regulators are remote controllable via main computer

## TECHNICAL DATA

<p>&gt; <b>Supply:</b></p> <p>Supply voltage (Test stand):</p> <p>Mains supply      3/PEN AC 50Hz 400V</p> <p>Nominal current    approx. 345A</p> <p>Power                approx. 240kVA</p> <p>Supply voltage (Computer system):</p> <p>Mains supply      1/N/PE AC 50Hz 230V</p> <p>Nominal current    approx. 7A</p> <p>Power                approx. 0.8kVA</p> <p>Compressed-air supply:</p> <p>Pressure            5 to 10bar</p> <p>Quantity            65lbpm</p> <p>Hydraulic supply:</p> <p>Capacity            approx. 50l</p>	<p>Vacuum chamber supply:</p> <p>Final pressure      min. 20mbar abs.</p> <p>&gt; <b>Measuring Equipment:</b></p> <p>Differential pressure: Range up to ± 1000mbar</p> <p>Pressure             Range 0 to 6bar abs.</p> <p>Flow:                 Range 5ml to 46000Nlpm</p> <p>Voltage               Range 0 to 40VDC</p> <p>Humidity:            Range 0 to 100rel%</p> <p>Temperature:        Range -20 to +60°C</p> <p>Resistance           Range 0 to 25000hm</p> <p>&gt; <b>Vacuum pump:</b></p> <p>Speed                1000min<sup>-1</sup></p> <p>Air quantity         1600m<sup>3</sup>ph each</p> <p>Drive motor         30kW (total 180kW)</p>
---	---

## OPTIONS

A wide range of options is available to fulfil our customers' requirements.  
 e.g.: Adaption for different aircraft types, etc.