

Disinfection Cart For Potable Water System

>DC2<



Picture shows extended version for hangar & tap water supply use

The Disinfection Cart is developed for easy and comfortable disinfection of the A/C potable water system.

The Disinfection Cart is available in two versions:

- Basic version for outdoor & apron use
- Extended version for hangar & tap water supply use

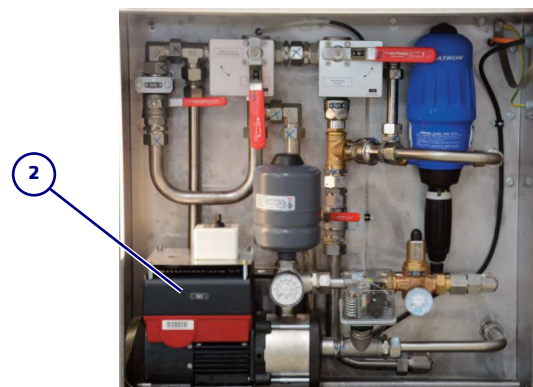
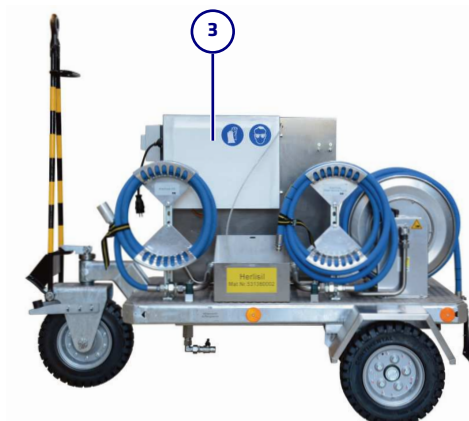
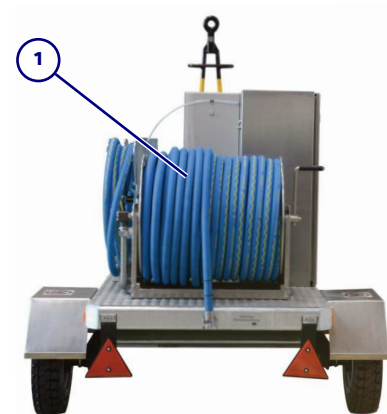
- > Easy operation
- > Automatic injection of hydrogen peroxide disinfectant to the water line during filling process
- > Water source:
 - Potable water service truck
 - Tap water supply (extended version)
- > Booster pump to compensate pressure drop in the supply line (extended version)

GENERAL INFORMATION

- > Design for in- and outdoor usage
- > Trailer easy to manoeuvre
- > Hose reel for fresh water supply
(diameter: ¾", length: 80m (262ft)) (extended version)
- > Hose bracket for fresh water supply from Potable Water Service Truck
(diameter: ¾", length: 5m (16ft))
- > Hose bracket for aircraft supply
(diameter: ¾", length: 5m (16ft))
- > 25m (82ft) power connection cable (extended version)
- > Purpose: Disinfection of the A/C potable water system
Flush of the A/C potable water system
Self-disinfection of the GSE (extended version)

EXTENDED VERSION FOR HANGAR & TAP WATER SUPPLY USE

- 1 Hose reel for fresh water supply
(diameter: ¾", length: 80m (262ft))
- 2 Booster pump to compensate pressure drop in
the supply line. Is used for self-disinfection of
GSE and protection
- 3 Electrical supply (mains connection):
1/N/PE AC 50Hz 230V with 25m (82ft) power
connection cable



TECHNICAL DATA

<p>> Media:</p> <p>Herlisil S40 and water</p>	<p>> Operating conditions:</p> <p>Operating temperature: 5 to 49°C (41 to 120°F)</p> <p>Storage temperature: 0 to 60°C (32 to 140°F)</p> <p>Usage: in a non-explosive area</p> <p>Noise emission: max. 70dB(A) in 1m (39.4in) distance</p>
<p>> Hydraulic parameters:</p> <p>Maximum water supply pressure: 10bar (145psi)</p> <p>Maximum flow rate: up to 50l/min (13.2gpm)</p> <p>Maximum operation pressure: 3.5bar (50psi)</p>	<p>> Dimensions and Weight:</p> <p>Length: 1900mm (74.80in)</p> <p>Width: 1300mm (51.18in)</p> <p>Height: 1650mm (64.96in)</p> <p>Weight: approx. 350kg (772lb)</p>
<p>> Measurements:</p> <p>Pressure: 0 to 10 bar (0 to 145psi)</p>	
<p>> Electrical supply: (extended version)</p> <p>Mains connection: 1/N/PE AC 50Hz 230V</p>	