

Test Stand For Leakage Tests

>PDHT6<



The test stand is developed for leak detection of high pressure and low pressure fuel systems in diesel engine serial production.

It can be adapted for many engine series types.

- > Test pressure up to 2,500bar
- > Electric pass through test and selection of injectors
- > Chiller for cooling the medium
- > Parameterized, automatic test sequence with report evaluation (15min test duration)
- > Hydraulic flushing block for plausibility check of the measuring instruments
- > Special sound insulation on the hydraulic power unit (max. 65dB(A))

GENERAL INFORMATION

- > The tank is filled via the external filling pump with automatic shutdown
- > Wireless barcode scanner for selection of motor data
- > Protective cover with drip trays
- > Low maintenance effort
- > Compact setup and easy access for maintenance tasks
- > Accessible by autonomous transport system

TECHNICAL DATA

<p>> Hydraulic test fluid:</p> <p>SRS Calibration Fluid with Colouring D51000A Cromatint Fluorscent Yellow 175 (Concentration 0.04%)</p>	<p>> Measurements:</p> <p><u>Temperature</u> (6 off) 0 to 100°C (32 to 212°F) ±1K</p>
<p>> Hydraulic parameters:</p> <p><u>Max. high pressure circuit:</u> Pressure: max. 2,500bar (36,250psi) Flow: max. 8.5l/min (2.2USgal/min)</p> <p><u>High pressure circuit:</u> Pressure: max. 150bar (2,175psi) Flow: max. 8l/min (2.11USgal/min)</p> <p><u>Low pressure circuit:</u> Pressure: max. 18bar (261.1psi) Flow: max. 16l/min (4.2USgal/min)</p>	<p><u>Flow</u> (2 off) 0 to 4l/min (0 to 1.05USgal/min) ±0.5% of full scale</p> <p>(1 off) 0 to 8l/min (0 to 2.1USgal/min) ±0.5% of full scale</p> <p>(2 off) 0 to 16l/min (0 to 4.2USgal/min) ±0.5% of full scale</p> <p><u>Pressure</u> (2 off) 0 to 18bar (0 to 261.1psi) ±0.5% of full scale</p> <p>(1 off) 0 to 160bar (0 to 3625.9psi) ±0.5% of full scale</p> <p>(2 off) 0 to 3,000bar (0 to 43,511psi) ±0.5% of full scale</p>
<p>> Electrical supply (requirements):</p> <p>Mains connection: 3/N/PE AC 50Hz 400V Nominal current: 65A Performance: 45kVA Prefuse: 80AgL</p>	<p><u>Electrical resistance (for continuity test)</u> (1 off) 0 to 100mV ±0.5% of full scale</p> <p>(1 off) 0 to 25mA ±0.5% of full scale</p>

TECHNICAL DATA

> Dimensions and weight:

Test stand

Width: 4,650mm (183.1in)
 Depth: 1,300mm (51.2in)
 Height: 2,460mm (96.8in)

Protective cover

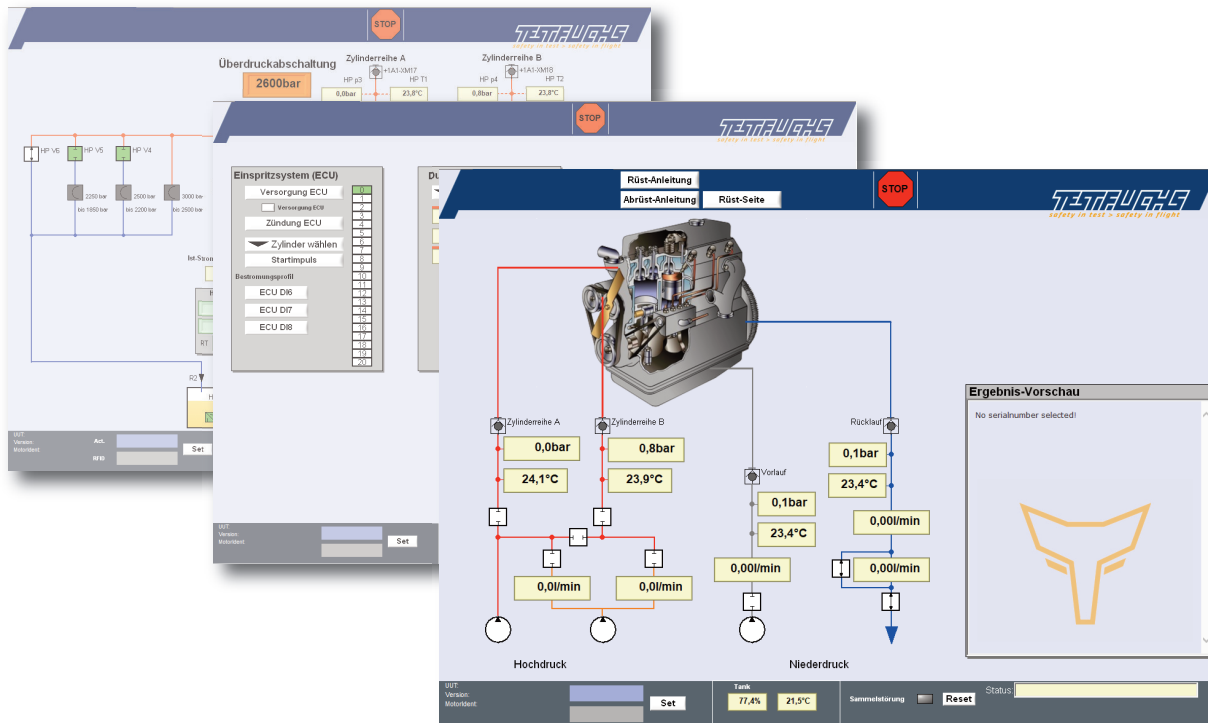
Width: 7,910mm (311.4in)
 Depth: 3,790mm (149.2in)
 Height: 3,010mm (118.5in)

> Operating conditions:

Operating temperature: 5 to 35°C (41 to 95°F)
 Storage temperature: 0 to 60°C (32 to 140°F)
 Height: max. 1,000m (3.280ft)
 over MSL (main sea level)
 rel. humidity: 10 to 95% (non condensing)
 Continuous noise emission
 max. 65dB(A)
 in 1m (39.4in) distance

OPTIONS

Various options available to meet our customers' requirements
 e.g.: requirement to the test program, dimensioning...



Software user interface