

Wing Test Equipment

>STE350BRE-WI<



The equipment is developed for testing at the AIRBUS A350 Pre-FAL in Bremen.

Operated tests:

- ATA28: Fuel Jettison
- ATA36: Bleed Air Ducting
- ATA47: Inerting System

The equipment can be adapted for different aircraft types.

- > Fully automated test procedure
- > Integrated injector vacuum pump
- > Operation via tablet PC
- > Quick release connector on supply and return hoses
- > Mobile design ensures high level of operational flexibility

GENERAL INFORMATION

- > Maintenance friendly by means of openings and doors
- > Low maintenance
- > Integrated drawer
- > Hose storage facilities
- > Fixed and swivelling castors

TECHNICAL DATA

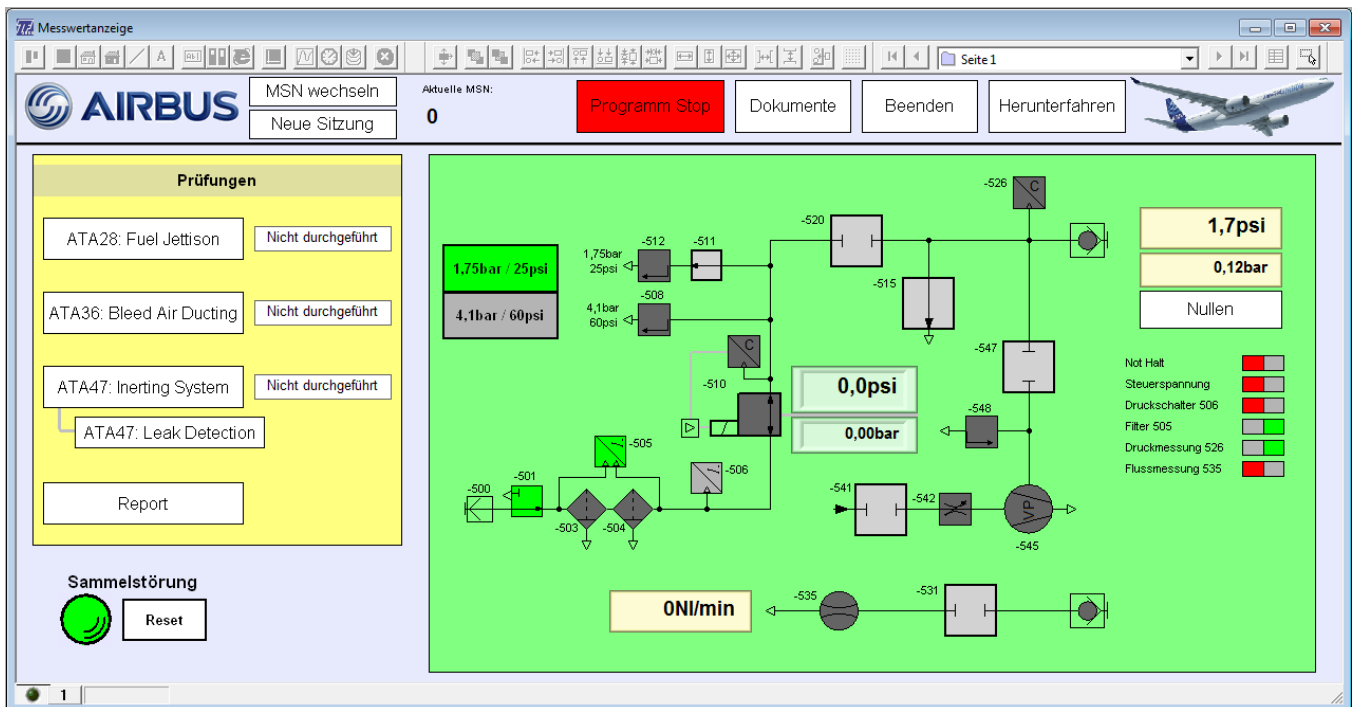
<p>> Medium:</p> <p>Compressed air</p>	<p>> Measurements:</p> <p>Pressure: 0 to 16bar abs \pm 0.5% o. m. r. (0 to 232psi abs \pm 0.5% o.m.r.)</p> <p>Pressure: 0 to 6bar \pm 1.5% o.m.r. (0 to 87psi \pm 1.5% o.m.r.)</p> <p>Flow: 150 to 3,000NI/min \pm 5% o.m.r. (5.3 to 105.9SCFM \pm 5% o.m.r.)</p> <p>o.m.r. ... of measuring range</p>
<p>> Pneumatical supply (requirements):</p> <p>Flow: min. 1,000l/min (35.3scfm)</p> <p>Pressure: 6 to 8 bar (87 to 116psi)</p> <p>Compressed air quality: ISO 8573-1 ISO Code 1-4-2</p> <p>Compressed air temp.: max. 40°C (104°F)</p>	<p>> Operating conditions:</p> <p>Operating temperature: 5 to 35°C (41 to 95°F)</p> <p>Storage temperature: 0 to 60°C (32 to 140°F)</p> <p>Altitude: max. 1,000m (3,280ft) MSL (main sea level)</p>
<p>> Electrical supply (requirements):</p> <p>1/N/PE AC 50Hz 230V</p> <p>Nominal current: max. 2A</p> <p>Power: 0.46kVA</p>	
<p>> Dimensions and weight:</p> <p>Width: 1,160mm (45.7inch)</p> <p>Depth: 1,500mm (59.1inch)</p> <p>Height: 1,360mm (53.5inch)</p> <p>Weight: approx. 350kg (772lb)</p>	

OPTIONS

Various options are available to adapt the device to our customers' requirements.
e.g.: Adaption for other aircraft types, etc.



Operating elements and tablet PC



User interface of the Software



Drawer with adapter



Rear of the equipment