

Test Stand for Main Fuel Pumps and HMU'S

>THMU1AF<



Automatic test stand for Main Fuel Pumps and HMU's.

- > Assembly trolley for an easy and quick assembly of the units under test (UUTs)
- > Preliminary set up during automatic test runs possible
- > Hydraulic quick clamping of the preliminarily set up UUT-adapter plate
- > Manual, semi- and fully automatic test run
- > Computer controlled via turnable and moveable operating unit
- > Compact construction and ergonomically designed
- > Noise level 75 dB(A)
- > Modem system for remote maintenance
- > Explosion protection via medium temperature-limitation (33 °C), technical ventilation (primary explosion protection) and gas detectors in the test unit

TECHNICAL DATA

<p>> Hydraulic supply unit:</p> <p>Boost Circuit: 70 000 pph at 50 psi max. 99 psia</p> <p>Max. pressure of the unit: 2100 psi</p>	<p>> Dimensions and weight:</p> <p><u>Test stand:</u></p> <p>Width: approx. 5250 mm Depth: approx. 2500 mm Height: approx. 2400 mm Weight: 6280 kg</p> <p><u>Hydraulic supply unit:</u></p> <p>Width: approx. 3700 mm Depth: approx. 1870 mm Height: approx. 2070 mm Weight: 2850 kg</p> <p><u>Control cabinet:</u></p> <p>Width: approx. 850 mm Depth: approx. 700 mm Height: approx. 2020 mm Weight: 250 kg</p> <p><u>Switch cabinet:</u></p> <p>Width: approx. 1220 2100 mm Depth: approx. 520 620 mm Height: approx. 2200 2200 mm Weight: 350 900 kg</p>
<p>> Test medium:</p> <p>MIL-C-7024 II (Flashing point 38 °C)</p>	
<p>> Drive motors:</p> <p>HMU: 50 - 8000 rpm 3 kW</p> <p>Pumps: 0 - 8500 rpm 185 kW</p>	
<p>> Mains supply:</p> <p>3/N/PE AC 50Hz 400V 1/N/PE AC 50Hz 230V</p>	
<p>> Compressed air supply:</p> <p>min. 6 bar max. 10 bar</p>	
<p>> Coolant supply:</p> <p>min. approx. 600 lpm at 20°C min. approx. 350 lpm at 15°C</p>	

UUT assembly:



HMU



Pump

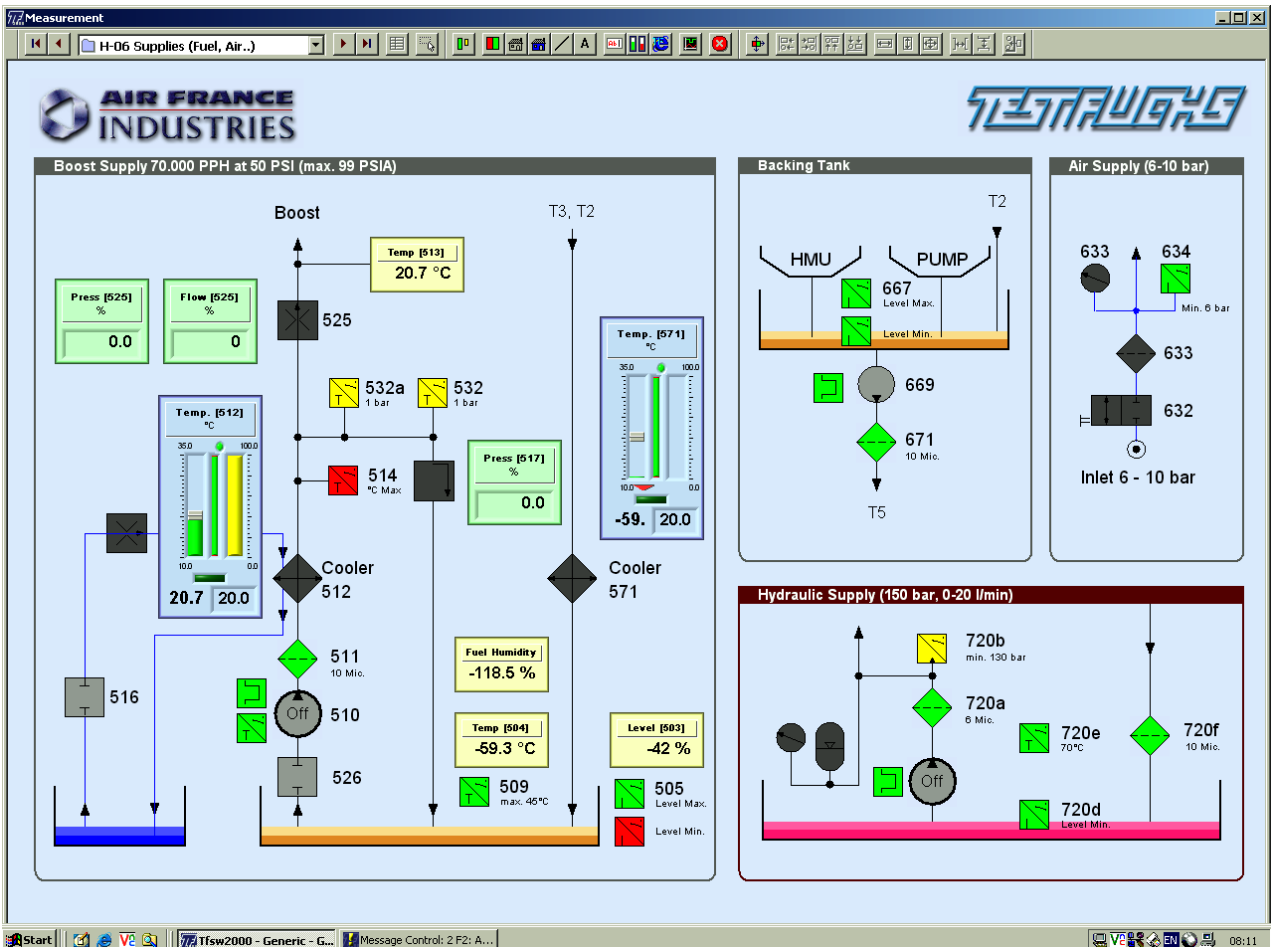


Figure of a program window



Hydraulic supply unit



Control cabinet



Switch cabinets



OPTIONS

A wide range of options is available to fulfil our customers' requirements.
e.g.: Adaption for different aircraft types, different touch-screens, etc.

Technical data are subject to change!