

Test Stand For Power Drive Units

>TPDU4C<



The test stand is developed to test Cargo Power Drive Units (PDU) and their characteristics e.g. drive speed, power generation or current consumption under load.

It can be adapted for various types of drive units.

- > The units under test (UUTs) are mounted on universal aluminium adapter plates outside of the test chamber which are clamped to the test carriage by means of a universal quick release device
- > A torque limiter unit is fitted for the torque limiter test in the test chamber
- > Active braking is generated by the friction drum until the equipment comes to a standstill
- > When testing braking torques the friction drum is driven by a three-phase motor

GENERAL INFORMATION

- > The test stand is controlled by a mobile control and measurement unit
- > In order to monitor UUT testing a test chamber observation door with polycarbonate glazing is fitted
- > The equipment is of an ergonomic and compact design
- > Doors and access panels enable easy access for maintenance
- > Easy and quick calibration is achieved by use of the TEST-FUCHS standard software

RANGE OF APPLICATION

Designation	Part number	Designation	Part number
3 Inch Self Lift Power Drive Unit	43100-15 43100-15-1 43100-15-2	3 Inch Self-Lift Power Drive Unit	43108-15 43108-15-1 43108-15-2
Power Drive Unit	2955T100-1C	Long Base & Short Base Power Drive Unit	43100-12 43100-13
Power Drive Unit	2955T100-5 2955T100-7 2955T100-9	Spring-Lift Power Drive Unit Assembly	43108-12
Power Drive Unit	2801T100-1	Power Drive Unit	(123100-1) 123100-3
Self Lift Roller Drive	181R42R181 181R42R181-1	Power Drive Unit	80000639-00
Cargo Powered Drive Unit	192AD1R218A 192AD1R218B	Power Drive Unit	80000640-00

TECHNICAL DATA

<p>> Electrical supply (requirements):</p> <p><u>Main power supply</u> Mains connection: 3/N/PE AC 50Hz 400V Nominal current: 20A Power: 13.9kVA Back-up fuse: 32A gl</p> <p><u>400Hz supply</u> Mains connection: 3/N/PE AC 400Hz 200V Nominal current: 10A Power: 3.5kVA Back-up fuse: 16A gl</p>	<p>> Pneumatic supply (requirements):</p> <p>Compressed air supply: 5 to 10bar (72.5 to 145psi) max. 100NI/min (3.53scfm/min)</p> <p>> Operating conditions:</p> <p>Operating temperature: +5 to +35°C (+41 to 104°F) Storage temperature: 0 to +60°C (-13 to +131°F) Altitude: up to 1,000m (3,280ft) above SL Noise emission: max. 70dB(A)</p>
---	--

TECHNICAL DATA

> Measurement range:

AC current

(3-off) 0 to 10Arms
±1% measurement range

AC voltage

(3-off) 0 to 300Vrms
±1% measurement range

DC current

(1-off) 0 to 1A
±0.5% measurement range

DC voltage

(7-off) 0 to 40V
±0.5% measurement range

Torque

(1-off) -1 to 1Nm (-8.85 to 8.85lbf in)
±0.5% of full scale

Speed

(1-off) 0 to 25mpm (0 to 82ft/min)
±0.5% measurement range

(1-off) 0 to 100rpm

±0.5% measurement range

Force

(1-off) 0 to 20kN (4,500lbf)
±0.5% of full scale

(1-off) -5 to 5kN (-1,124 to 1,124lbf)
±0.5% of full scale

Position measurement

(1-off) 0 to 60mm (0 to 2.36in)
±0.1mm abs.

> Dimensions and weight:

Test stand

Width: 1,300mm (51.2in)

Depth: 2,000mm (78.7in)

Height: 2,125mm (83.7in)

Weight: ~ 1,300kg (~2,870lb)

Measurement cabinet

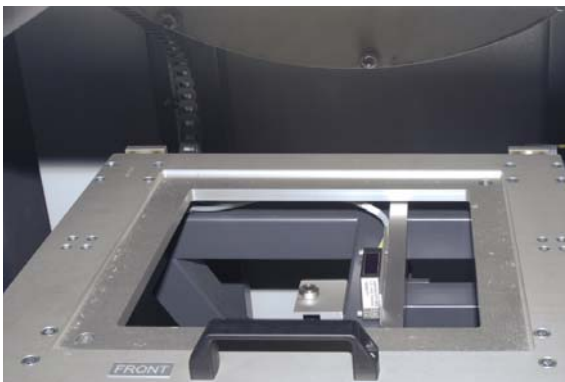
Width: 600mm (23.6in)

Depth: 720mm (28.3in)

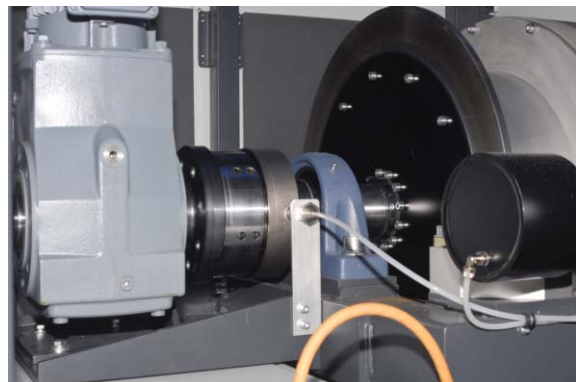
Height: 1,720mm (67.7in)

Weight: ~ 250kg (~ 550lb)

Test carriage under the friction drum



Interior of the test stand



OPTIONS

Various options are available to meet our customers' requirements

e.g.: Adaption to other PDU types, touch screen, non-contact temperature measurement, CAN-BUS,...

Technical data are subject to change!



TEST-FUCHS GmbH

Test-Fuchs Strasse 1-5
A-3812 Gross Siegharts
Tel. +43 (0)2847 9001-0
Fax +43 (0)2847 9001-299
office@test-fuchs.com



TEST - FUCHS

Ing. Fritz Fuchs GmbH
Albert Einstein Strasse 4
D- 85435 Erding
Tel. +49 (0)8122 89207-30
Fax +49 (0)8122 89207-37
tf-erding@test-fuchs.com



TEST - FUCHS

Ing. Fritz Fuchs GmbH
Tempowerkring 6
D- 21079 Hamburg
Tel. +49 (0)40 79012690
Fax +49 (0)40 79012695
tf-hamburg@test-fuchs.com



Test-Fuchs Ltd.

PO Box 287, Diss
IP22 4XR
Tel. +44 (0)1379 651605
Fax +44 (0)1379 651605
tf-uk@test-fuchs.com



Test-Fuchs S.r.l.

Fraz. S. Anna 57
I-14030 Rocca d´Arazzo (AT)
Tel. +39 0141 408488
tf-italy@test-fuchs.com