



## ATA CHAPTER 29 - HYDRAULIC POWER

TEST-FUCHS provides you with ground support equipment for every need within ATA chapter 29. All our products are characterised by high-quality and rapid availability. Increase safety and productivity while reducing costs and minimising downtime. Our GSE is designed with the objectives of your crew and maintenance teams in mind. TEST-FUCHS has a high-quality answer for your needs:



### Water Separator System and Hydraulic Purifier >WSS4<

is developed to extract water from phosphate ester based media:

- > Applicable during regular maintenance tasks, fully automatic process
- > Extends the lifetime of the oil, saves costs and is good for the environment
- > System reaches water concentrations below 1000ppm



### Test Equipment for RAM AIR TURBINES of A320F/A330/A340

designed to accomplish a functional test of the RAT:

- > Compact stainless steel construction
- > Storage space for accessories
- > Skydrol-resistant construction with sealed electrical chamber and safety glass cover plate
- > Operation with battery / mains or aircraft supply



### Test Equipment for RAM AIR TURBINES of A350/A380

is developed to drive the Ram-Air turbine during RAT testing:

- > Certified according to Tool/Equipment Bulletin No: 350-C9003 TEB Issue No: 2
- > Hoses for supply, leakage and return
- > Storage box



### Hydraulic Servicing Trolley >HST21<

is designed for the Airbus A400M or military fighter jets:

- > Variable pressure and flow regulation air separation by vacuum tank
- > Operation and indication on one touchscreen panel
- > Service friendly by large maintenance flaps with gas springs
- > Designed for operation in open or closed loop

## DATA SOLUTIONS - ENTER THE NEW WORLD OF DIGITALISED TESTING WITH TEST-FUCHS

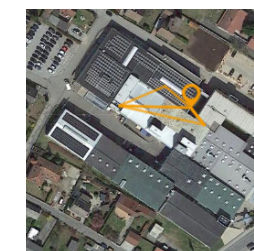
The HGPU can send operating data collected by the PLC but also uses GPS for position tracking.

DATA SOLUTIONS is an all-in-one solution to connect physical machines to the digital world in order to create value out of digitalisation advantages. For our customers DATA SOLUTIONS is designed as an easy-to-use cloud-based web application, which does not require any additional software to be installed. The software provides easy access to cross-company data and information for all authorised participants and represents a global interface for data exchange.

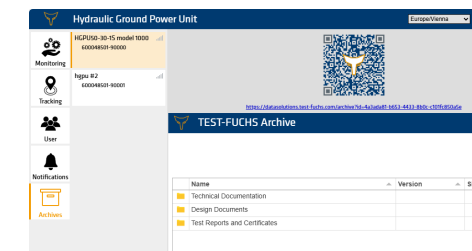
Customers can use the web interface for live data monitoring but also for visualising historical data. This includes operating data like pressure, flow, log messages and a lot more. It is possible to set triggers for sending emails depending on certain events, e.g. if a threshold is reached, or an error occurred. The webpage also includes a map showing the location and routes in the past of all units owned by a customer.



Monitoring of live and past data



Device tracking



Interface for device documentation

TEST-FUCHS has a global reputation for quality and innovation. More than 75 years of experience with the global players has resulted in a special relationship with our customers. We are still a family-owned company, eager to adapt to the customer's needs. TEST-FUCHS test systems are delivered to airlines, original equipment manufacturers and maintenance, repair and overhaul companies. Our new product **HGPU50-30-1S** is a result of more than 60 years of experience.

## CONTACT

**AUSTRIA**  
TEST-FUCHS GmbH  
Test-Fuchs Strasse 1-5  
3812 Gross Siegharts  
Phone: +43 (0)2847 9001-0  
E-mail: office@test-fuchs.com

**ITALY**  
TEST-FUCHS S.r.l.  
Kreuzgasse 15  
39042 Brixen BZ, Italy  
Phone: +39 348 4077 164  
E-mail: tf-italy@test-fuchs.com

**GERMANY - ERDING**  
TEST-FUCHS, Ing. Fritz Fuchs GmbH  
Albert-Einstein-Strasse 3  
85435 Erding  
Phone: +49 (0)8122 89207 430  
E-mail: tf-erding@test-fuchs.com

**FRANCE**  
TEST-FUCHS S.A.R.L.  
c/o Sofradec  
16, Rue Auber  
75009 Paris  
Telephone: +33 7 88 84 6114  
E-mail: tf-france@test-fuchs.com

**GERMANY - HAMBURG**  
TEST-FUCHS, Ing. Fritz Fuchs GmbH  
Rudolf-Diesel-Straße 7  
21629 Neu Wulmstorf  
Phone: +49 (0)8122 89207 51  
E-mail: tf-hamburg@test-fuchs.com

**SINGAPORE**  
TEST-FUCHS Pte Ltd  
4 Battery Road  
Bank of China Building #25-01  
049908 Singapore  
Phone: +65 8307 6593  
E-Mail: tf-singapore@test-fuchs.com

**UNITED KINGDOM**  
TEST-FUCHS Ltd.  
Unit 30, Kings Street Industrial Estate  
King Street, Langtoft  
Peterborough, PE6 9NF  
Phone: +44 (0)1778 382744  
E-mail: tf-uk@test-fuchs.com

**UNITED STATES OF AMERICA**  
TEST-FUCHS Corporation  
10325 Brecksville Rd.  
Brecksville, OH, OH 44141  
United States  
Phone +1 440 584 9002  
E-Mail: office@test-fuchs.us



## HYDRAULIC GROUND POWER UNIT HGPU50-30-1S





# HYDRAULIC GROUND POWER UNIT HGPU50-30-1S

## ATA CHAPTER 29 - Hydraulic Power



Touchscreen control panel



Improved design in every aspect



Realtime monitoring and diagnostics



More integrated features, more functionality



Reduced training requirements

## MAINTENANCE - ATA CHAPTER 29

Ground tests ensure that all systems and components of the aircraft are functioning correctly before it takes to the skies and ensures the safety of passengers and crew. Our Hydraulic Ground Power Unit supplies 3000psi aircraft with the necessary hydraulic pressure for maintenance activities. It has been specifically designed for AMM tasks associated with ATA Chapter 29. Our updated design focuses on simplicity and efficiency. This is the result of more than two

decades of experience in this sector and knowing the specific needs of our customers. The operator experience is enhanced by our touchscreen HMI, intuitive design and seamless interaction. This reduces training requirements and increases overall efficiency.

We've made it even more ergonomically friendly with a redesigned fibreglass cover and simplified interior layout for easy maintenance and access.



Sight glass



Sampling points



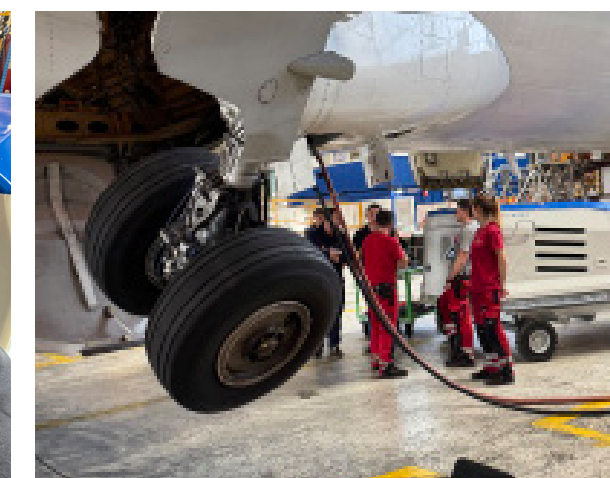
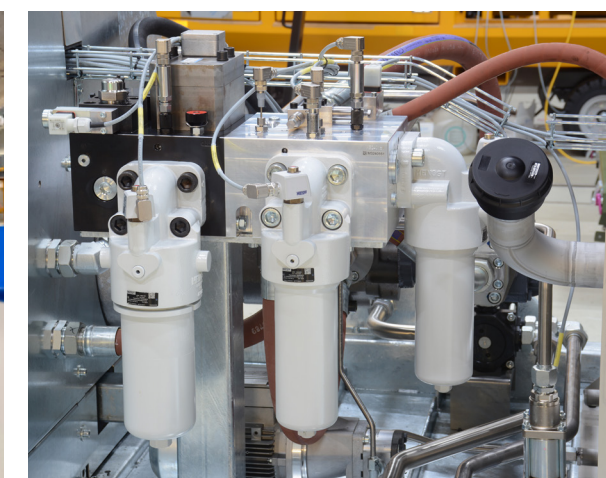
Touch display



Scan for more details



## HYDRAULIC GROUND POWER UNIT IN ITS NEWEST SHAPE



## TECHNICAL HIGHLIGHTS

### Lightweight cover with 2 parts

- > Quick and easy handling for regular maintenance
- > Sight glass for viewing tanks fill level

### Hydraulic block

- > Fewer hoses, less maintenance
- > All filters in one ergonomic place

### Sampling points

- > For taking fast and easy oil samples

### Spring-loaded chassis

- > Preventing electronics and onboard parts from damages

### Built-in PLC

- > Processing digital in- and outputs shown on touch display

### Digitalisation

- > Full control via the touchscreen display
- > QR-code for easy access to documentation, certificates and instruction videos